

Technical Manual



JBL4673

SPECIFICATIONS

ACOUSTIC & ELECTRICAL SPECIFICATIONS:

- Nominal Impedance: 8 ohm
- Power Rating: Continuous Pink Noise: 150W
Continuous Program: 300W
- Frequency Response: 40 Hz to 20 kHz
- Sensitivity: 97 dB SPL*
- Crossover Frequencies: 500 Hz

SYSTEM COMPONENTS:

- Cabinet: C4507
- Grille: N/A
- Low Frequency Transducer: 380mm (15 in.) Cone Transducer (2225H)

*1 Watt (2.83 V RMS) @ 1 Meter

SYSTEM COMPONENTS: (cont'd)

- High Frequency Transducer: 100mm (4 in.) Pure Titanium Diaphragm (2445J)
- Crossover Network: 3115A

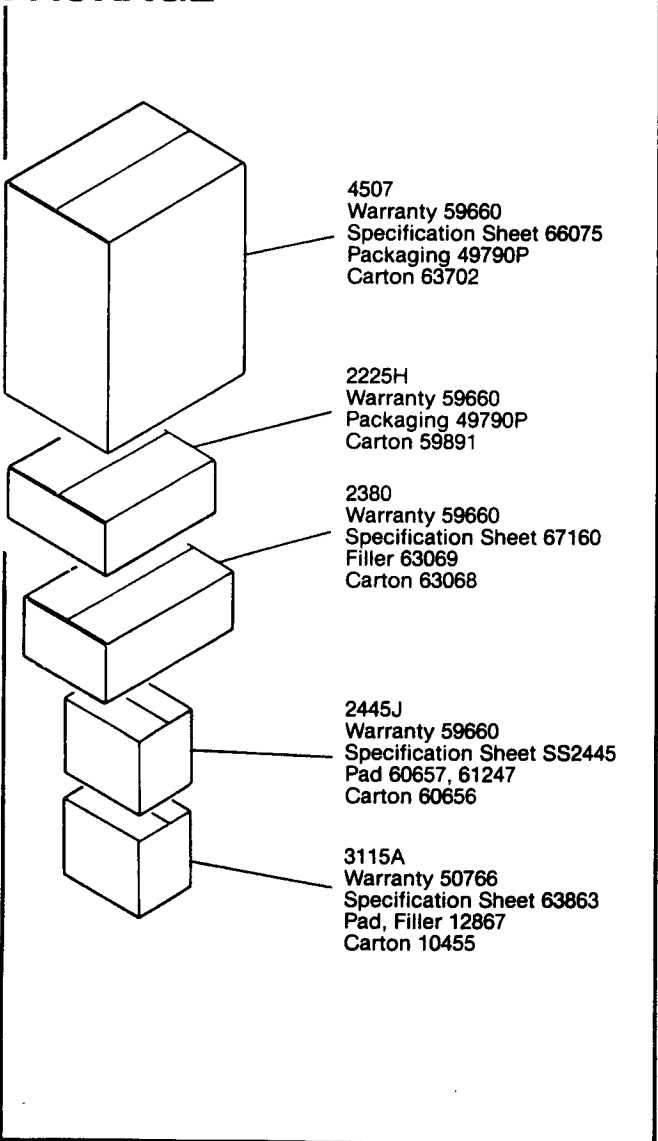
PHYSICAL SPECIFICATIONS:

- Enclosure Dimensions: 546mm x 1054mm x 448mm D (41.5 x 21.5 x 17.62 in. D)
- Shipping Weight: - 110 lbs.

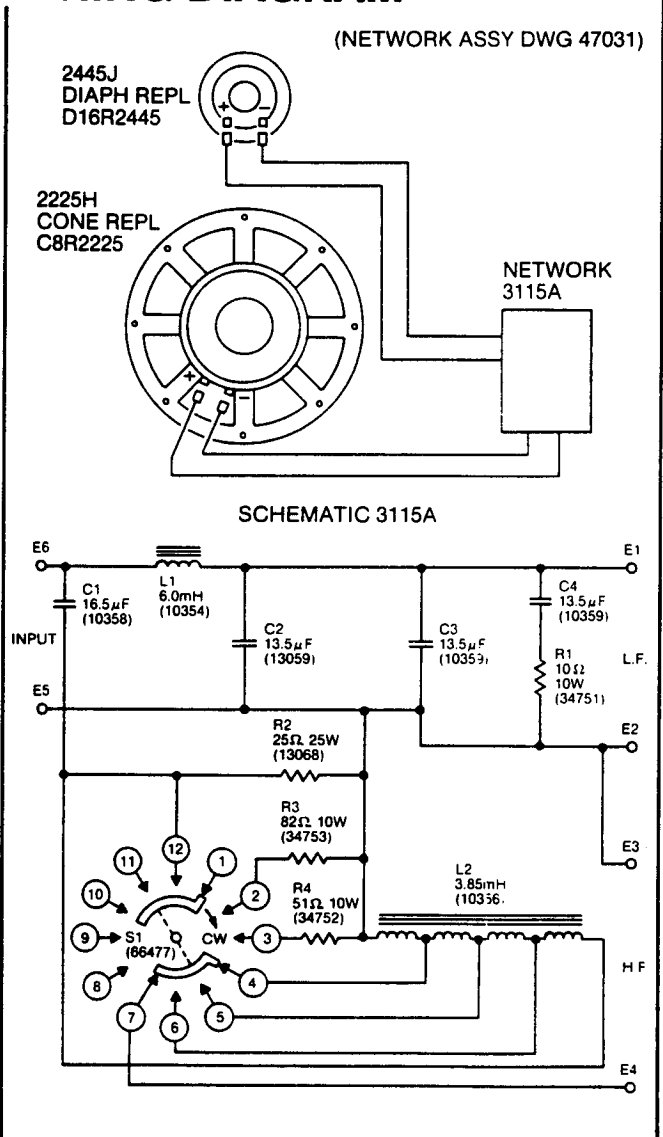
WARRANTY INFORMATION:

- Refer to the Warranty Statement packed with each product.

PACKAGE



WIRING DIAGRAM



COMPONENT EXPLODED VIEW

Horn 2380A
64889

Bolt (Ref)

Speaker High Freq
2445J
Diaph Repl
D16R2445
Use Mounting Hardware
Included With
Installation Kit 57536

Support 2508
60851
Use Mounting Hardware
Included With Unit

Network 3115A
47031
Use Mounting Hardware
Included With
Installation Kit 55343

Screw
(Ref)

Port Tube
57932
(Not For Sale)

Gasket, Vinyl
34499

Cabinet 4507
63299
(Not For Sale)

Screw
(Ref)

Speaker Low Freq
2225H
Cone Repl
C8R2225
Use Mounting Hardware
Included With
Installation Kit 55340