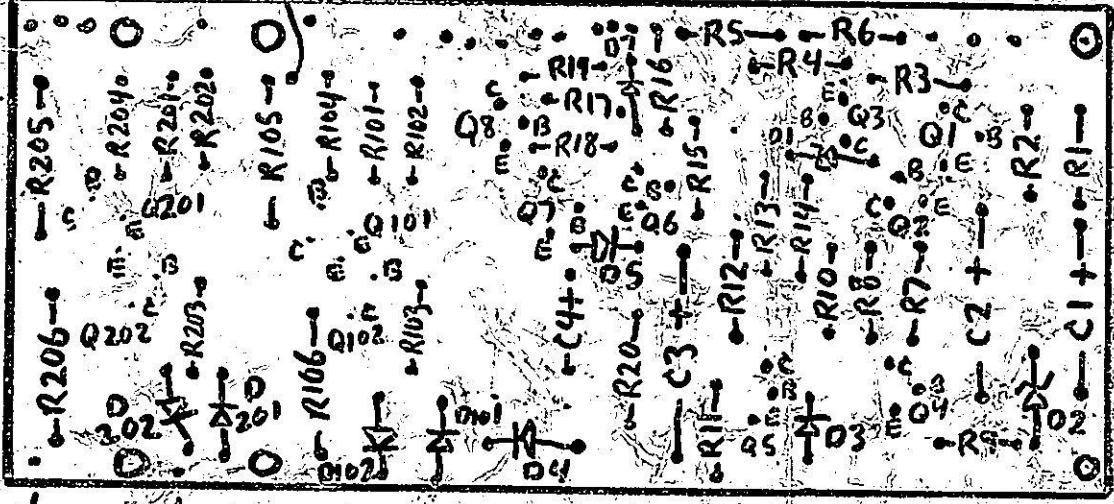


- OVERLED 2 — D203
- OVERLED 2 + D203
- SPARE + VCC.
- OVERLED 2 INPUT
- OVERLED — D103
- OVER LED + D103
- OVERLED 1 INPUT
- TO AC ON BRIDGE RECT.
- VCC
- ON RELAY LED D8
- ON FAULT LED D8
- ON FAULT LED D8
- ON RELAY
- + VCC
- GROUND
- INPUT 2
- INPUT 1



SPEAKER SAVER PARTS LOCATION

- Q1,3,4 = 2N3904
- Q5 = 2N3906
- Q5 = 2N3568
- Q6 = 60V 2N2219A
- Q7 = 2N3568
- Q9 = 2N3645
- Q10 = 2N3568

- SPARE — VCC
- SPARE GROUND

