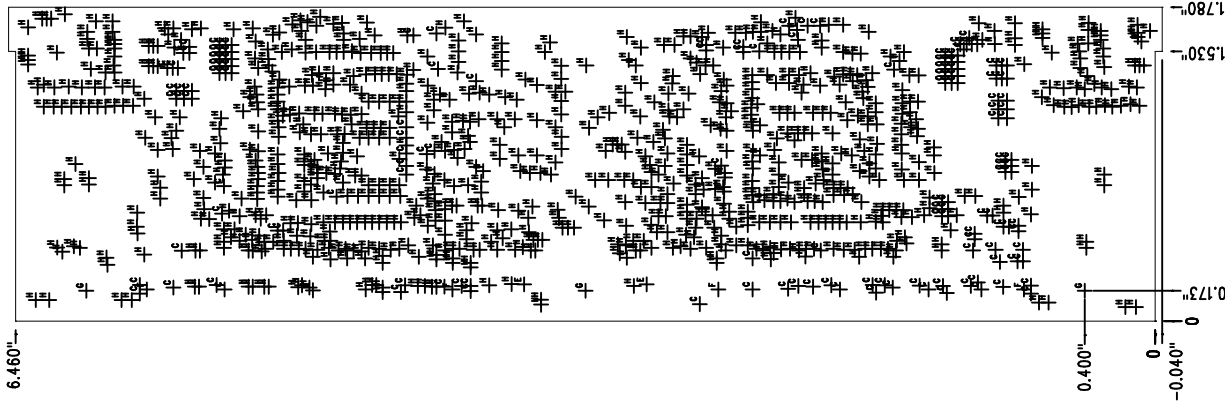


6.460"



**NOTES: (UNLESS OTHERWISE SPECIFIED):**

1. ALL DIMENSIONS ARE IN INCHES. TOLERANCE +/- .005"
2. FABRICATE BOARD USING PANELIZED MASTER GERBER FILE DATA 0281-C00021-R01, REV C
3. BOARDS SHALL BE FABRICATED IN ACCORDANCE WITH IPC-6012A
4. MATERIAL:
  - LAMINATE - NEMA GRADE FR4
  - CIRCUIT FOIL - 2 oz COPPER EQUIVALENT AFTER PLATING.
5. FINISH: ALL EXPOSED CONDUCTIVE PATTERN AREAS NOT COVERED WITH SOLDERMASK SHALL HAVE A RoHS COMPLIANT FINISH.
6. SOLDERMASK ON TOP AND BOTTOM SHALL BE ONE-TO-ONE RATIO, DO NOT MODIFY. COLOR: GREEN. SOLDERMASK SHALL BE NON-CONDUCTIVE EPOXY-BASED INK.
7. SILKSCREEN ON TOP & BOT SIDE OF BOARD USING NON-CONDUCTIVE EPOXY-BASED INK. COLOR: WHITE. NO SILKSCREEN ALLOWED ON ANY SOLDERABLE SURFACES.
8. THE BOARD SUPPLIER TO PROCESS A DESIGN RULE CHECK (DRC) USING GERBERS PROVIDED (REF NOTE 2) PRIOR TO BOARD FABRICATION UNLESS WAIVED IN WRITING BY D2AUDIO.
9. BOARD WARPAGE .01" PER INCH MAXIMUM.
10. OVERALL BOARD THICKNESS AFTER FINISH: 0.062 +/- 0.010%.
11. BOARD SIZE DIMENSIONS APPLY AFTER BREAKAWAY FROM PANEL.
12. HOLE TOLERANCE +/- .003
13. ALL HOLE DIMENSIONS APPLY AFTER PLATING.
14. FINAL FABRICATED BOARD MUST BE RoHS COMPLIANT.

**PHOTOPLOT FILE NAMES:**

- TOP SILKSCREEN
- TOP SOLDER MASK
- TOP SIDE
- INNER LAYER 2
- INNER LAYER 3
- INNER LAYER 4
- INNER LAYER 5
- BOTTOM SIDE
- BOTTOM SOLDER MASK
- BOTTOM SILKSCREEN

QTY	SYM	PLTD	TOL
148	⊕	YES	+/-0.0
2	⊖	NO	+/-0.0
4	⊖	NO	+/-0.0
3	⊕	YES	+/-0.0
879	⊖	YES	+/-0.0

PCB,SOFIA INPUT BD,8-CHANNEL	
0281-C00021-R01	
DATE: 02/02/06	DRAWN: H. MEZA
REV: C	
ENG: Dennis C.	
D2Audio Corp.	
Confidential and proprietary information.	
	DRILL DRAWING

LAYER SCHEDULE  
SCALE: NONE