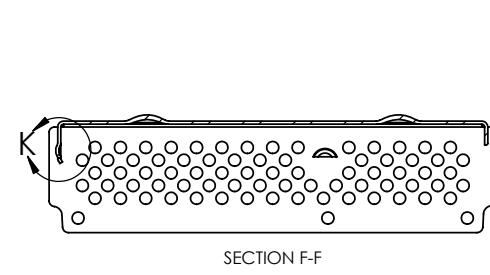
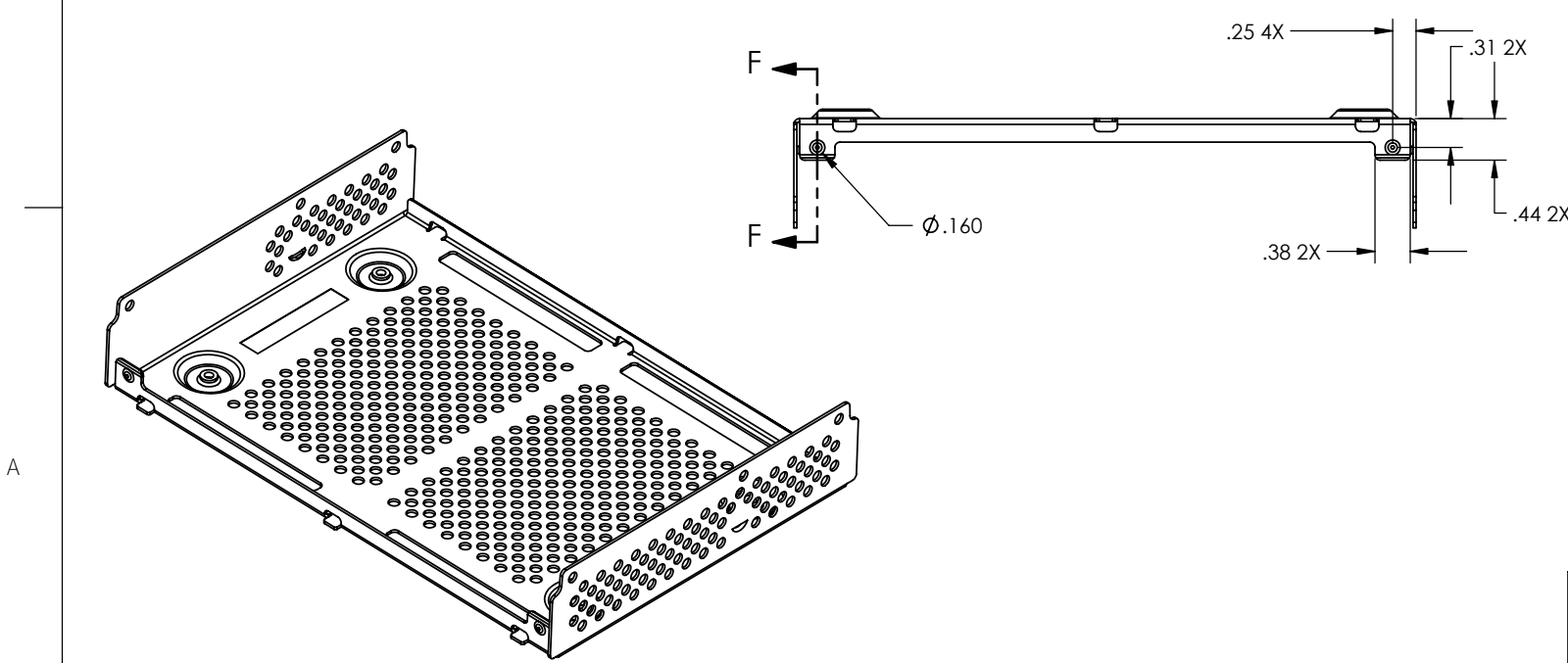
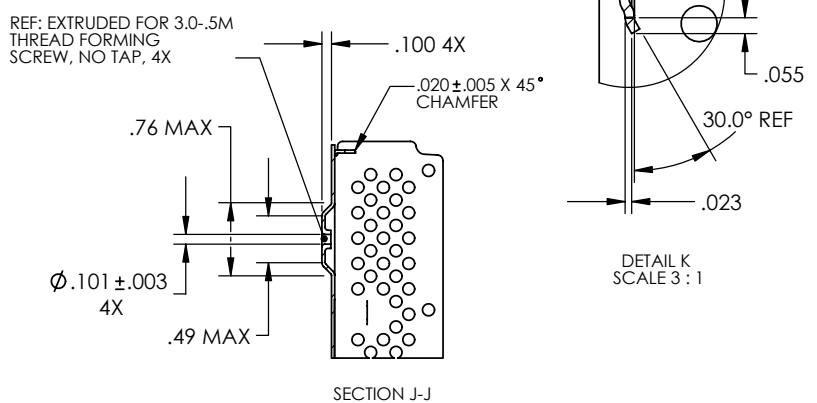
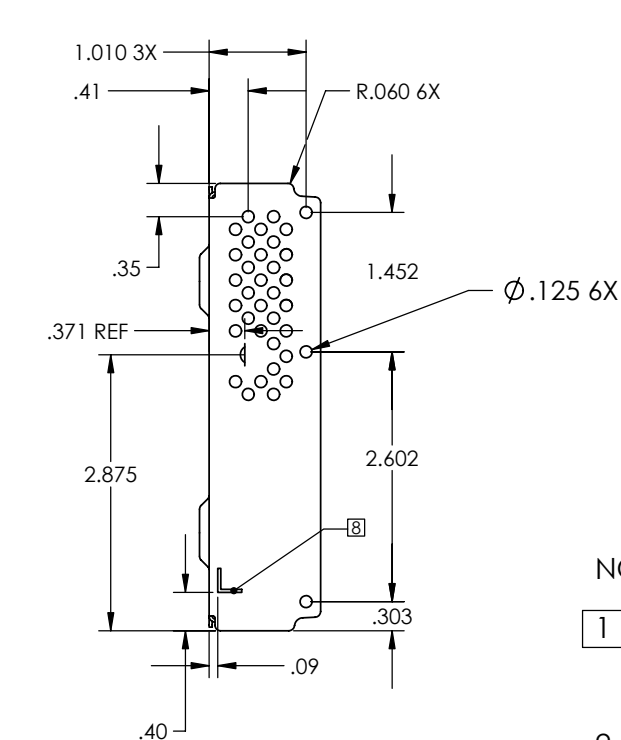
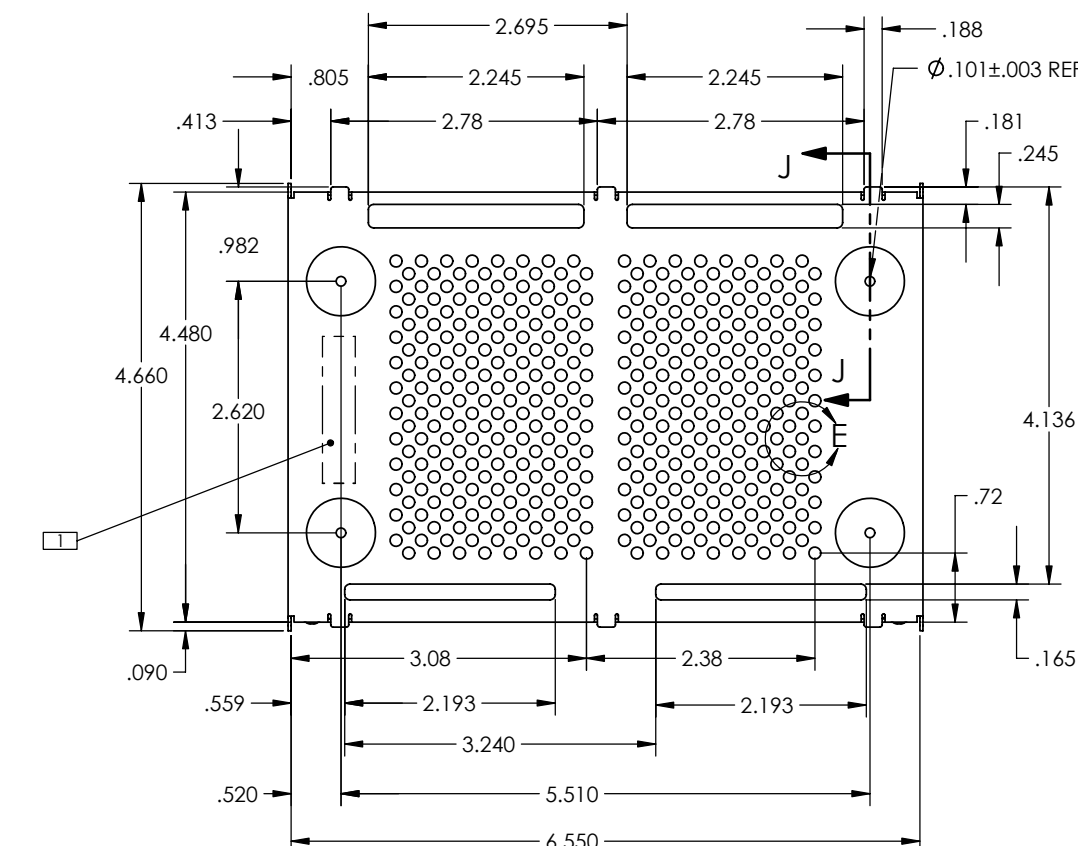
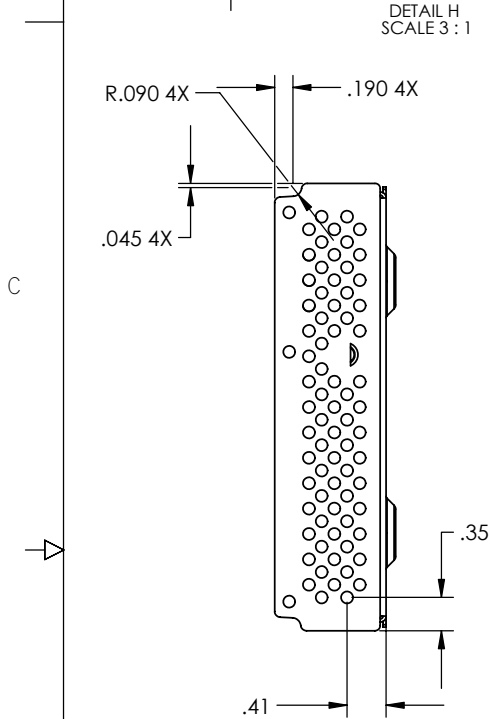
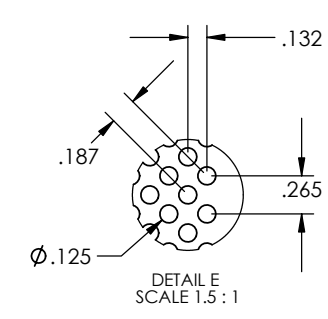
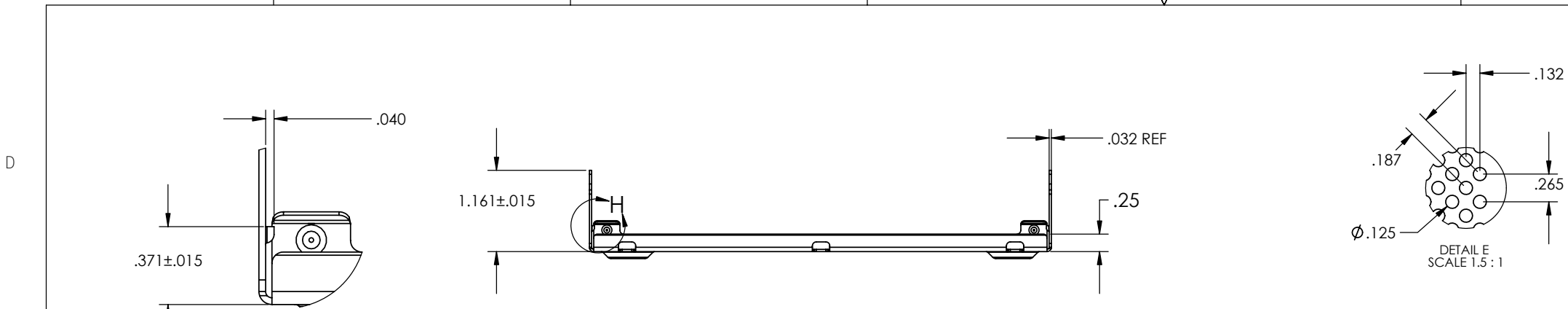


REVISIONS				
REV	ECD	DESCRIPTION	DATE	APPROVED
01		RFQ PACKAGE	4/15/04	
02		RELEASE FOR PROTOTYPE		4/19/04
03		ENHANCED DIMENSIONS		5/6/04
A		ADDED LEAD-INS TO AID ASSY; LENGTHED .010	8/23/04	NLC
B	10160	CHANGED PLATING, LOOSENED TOLERANCES	10/19/05	NLC



- NOTES: (UNLESS OTHERWISE SPECIFIED)
- MARK PART WITH PART NUMBER, REVISION LEVEL, VENDOR, AND DATE CODE, APPROX. WHERE SHOWN.
  - MATERIAL: CRS 1010 to 1018, 22 GAGE (.032 +/- .003 THICK).
  - PLATING: ZINC WITH CLEAR CHROMATE PER ASTM B633, TYPE III, FE/ZN 5, USING TRIVALENT CHROMIUM INSTEAD OF HEXAVALENT CHROMIUM. FINISHED PART SHALL BE ROHS COMPLIANT, AND SHALL WITHSTAND 12 HOURS IN A SALT SPRAY TEST PER ASTM B117 AND ASTM B633 SECTION 7.4.
  - ALL INSIDE BEND RADII TO BE .015.
  - ALL BEND RELIEFS TO BE MINIMUM.
  - PART TO BE FREE OF SHARP CORNERS, EDGES AND BURRS.
  - INTERPRET DRAWING PER ASME Y14.5M-1994.
  - INDICATED LABEL MARK TO BE RECESSED .001 TO .005

UNLESS OTHERWISE SPECIFIED DIMENSIONS ARE IN INCHES		PROJECT		<b>D2AUDIO</b>
TOLERANCES ARE:		APPROVALS	DATE	
FRACTIONAL	DECIMAL	ANGULAR		<b>BASEPLATE, X-SERIES, 8 CHNL</b>
X ± 1/32	XX ± 0.02	± 1°		
		MATERIAL	SEE NOTE #2	CHECKED
		FINISH	SEE NOTE #3	N. CONDRA
		NEXT ASSY	USED ON	DATE
		APPLICATION	DO NOT SCALE DRAWING	4/20/04
SIZE	DWG NO.	SCALE: 1:1	FILE NAME	REV
D	0220-000006-001			B
				SHEET 1 OF 1

PROPRIETARY NOTICE  
THIS DRAWING IS THE PROPERTY OF D2 AUDIO CORP AND IS TO BE RETURNED UPON DEMAND OR TERMINATION OF THE TRANSACTION FOR WHICH IT WAS FURNISHED. USE OF ANY INFORMATION CONTAINED ON THIS DRAWING FOR ANY PURPOSE OTHER THAN EXPRESSLY AUTHORIZED IN WRITING BY D2 AUDIO CORP IS PROHIBITED.