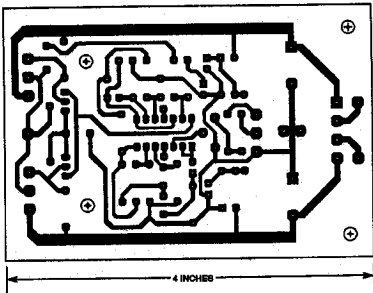


FIG. 1—SCHEMATIC DIAGRAM of the powered subwoofer. The power supply consists of a center-tapped 48-volt transformer, bridge rectifier, and filter capacitors C7 and C8.



FOIL PATTERN for the amplifier/crossover board.

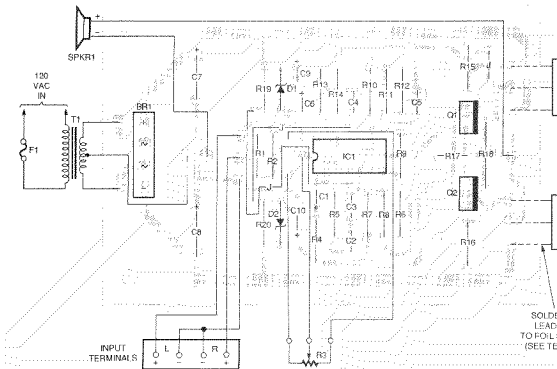


FIG. 4—PARTS-PLACEMENT DIAGRAM. Power transistors Q3 and Q4 must be heat-sinked (see text and Figs. 5 and 6).