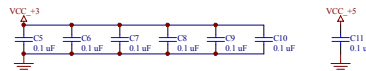


These two mounting holes are located near the front panel of the CM-1.

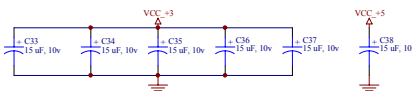
These two mounting holes are located at the "back" of the CM-1, near the main interface connectors.

This resistor is located near the front panel of the CM-1 and connects signal ground with chassis ground.

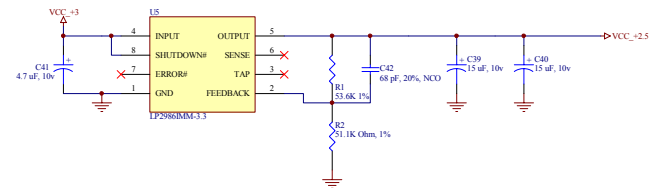


AC Signal Return Path Caps

Note: Similar AC signal return path caps must be included on the motherboard near the connector.



Power Decoupling Caps



Title: Module Interface Connector
Peak Audio, Inc.
1790 30th Street, Suite 414
Boulder, CO 80301
303-449-9337
Filename: connector.sch
Sheet: 3 of 8
Date: 21-Aug-2000
(C) 2000, Peak Audio, Inc.