

47

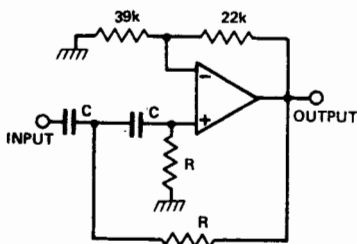
High Pass Active Filters

$$F_c = \frac{1}{2\pi RC} \text{ Hz}$$

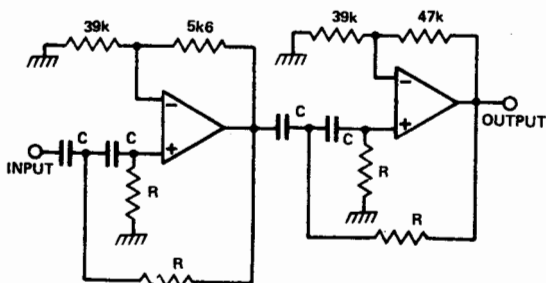
2 pole roll-off = +12 dB/octave

4 pole roll-off = +24 dB/octave

R	C	F_c
107k	15n	100 Hz
10k7	15n	1 kHz
10k7	1n5	10 kHz



2 pole Butterworth



4 pole Butterworth

