

20 Combination Lock

□ The CD4016 contains four electronic switches that can be operated with control current. The

relay in this circuit will operate only if A and B switches are on (switched to the +9V side) and if

PARTS LIST FOR COMBINATION LOCK

C1—0.1- μ F ceramic capacitor, 15 VDC

IC1—4016 quad bilateral switch

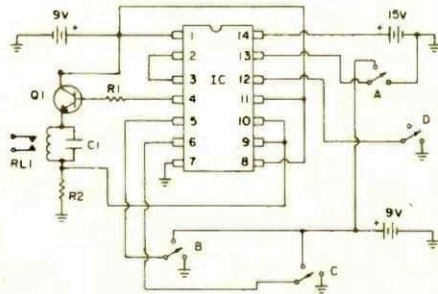
Q1—2N4401 transistor

R1—10,000-ohm, $\frac{1}{2}$ -watt resistor

R2—100-ohm, $\frac{1}{2}$ -watt resistor

RL1—any relay w/9 VDC coil to suit application

SWITCHES (A, B, C, D)—SPDT slide type



C and D are off. You can experiment with different connections to make your own

combination, or substitute rotary switches with additional contacts.