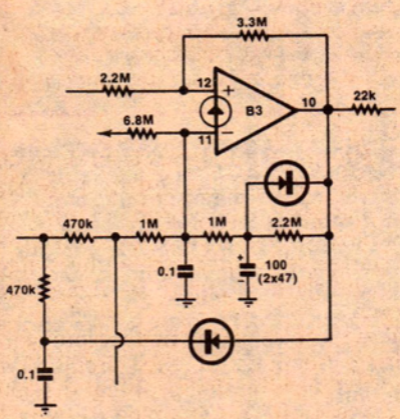
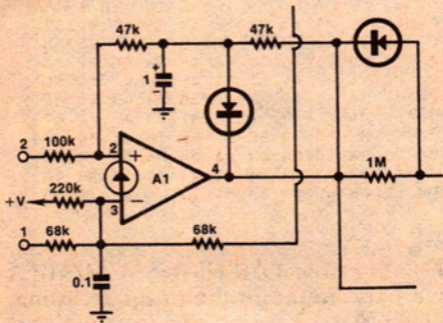


CAR BURGLAR ALARM (November 1976. File No. 3/AU/16): Some readers have reported a problem involving spontaneous arming of the circuit when other electrical devices, such as the starter, are operated. Others have reported a tendency for the alarm circuit to re-trigger after automatic horn shutdown.

Both are due to spikes or noise on the battery line being fed into the appropriate sections of the circuit. Two modifications are suggested. For the first problem the 100k resistor between pins 2 and 4 of A1 is changed to two 47k resistors and the junction connected to a tantalum capacitor, which connects to chassis. The same junction connects to a diode, the cathode end of which connects to pin 4.

For the second problem the line between pin 3 of B1
(Continued opposite)



and pin 10 of B3 is modified. A diode is connected between the (lower) 470k resistor and pin 10, with the cathode towards the resistor. From the junction a 0.1uF capacitor connects to chassis.