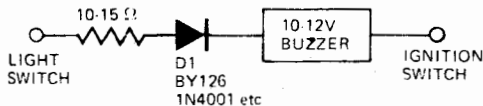


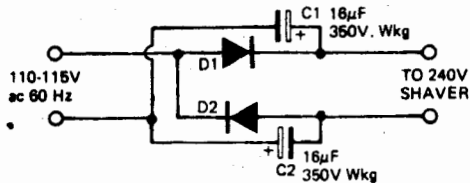
## AUTOMOBILE LIGHT REMINDER

This circuit ensures that car lights are switched off when the ignition is turned off.

Any low power silicon rectifier diode will be satisfactory together with a suitable 12 V buzzer or bell. Only two connections are required. The alarm will sound if you leave the lights on after cutting the ignition.



## TRAVELLER'S SHAVER ADAPTOR



D1 and D2  
BY 127 or similar

Many overseas countries have 115 volts mains supplies. This can be a problem if your electric shaver is designed for 220/240 volts only.

This simple rectifier voltage doubler enables motor driven 240 volt shavers to be operated at full speed from a

115 volt supply.

As the output voltage is dc the circuit can only be used to drive small ac/dc motors. It cannot be used, for example, to operate vibrator-type shavers, or radio sets unless the latter are ac/dc operated.